



*The safe way of docking!*



**ParmaFender® is a patented fender system with outstanding energy absorbing qualities, designed for most kinds of docks, marinas and quays etc. Several hundred thousand meters are already in use.**

The ParmaFender® is a continuous chain of fender-pillows which are filled with air by means of a "valve-hose" that goes through the entire chain of fender elements. The "valve-hose" has a number of holes, which act as resisting valves that give the fender outstanding shock-absorbing qualities. Valves and plugs can easily be installed to the ends.

Between each fender-segment there is a mounting area where holes can be made to fasten the fender to various foundations. The Parma Fender® can be mounted with screws or with specialized strong strips to avoid damaging the foundation (galvanized steel etc.). Parma Fender can easily be bent around sharp corners.

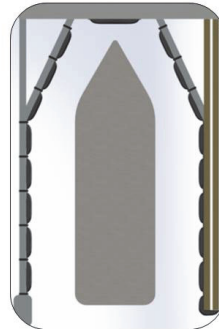
The ParmaFender® is delivered on reels and can be cut into the required lengths for the consumer.

The fender-material used is Thermoplastic Polyurethane (TPU Shore A85) which is flexible and extremely resistant to wear and tear, even at temperatures down to -50°C. The TPU is outstanding compared to other materials that are commonly used for fendering purposes, and the extreme material quality is a direct spin-off from the manufacturers heavy duty products to the Norwegian offshore industry.

In case of damages on the ParmaFender®, each segment can easily be cut off and replaced with a new segment by means of splice plugs.

Size:	Outer diameter:	Segment length:	Mounting area:	Wall thickness:	Standard colours:
Medium	75mm	500mm	L:70 x H:110mm	>3,5mm	Black / Grey
Large	90mm	500mm	L:70 x H:140mm	>4,5mm	Black / Grey
X-Large	115mm	500mm	L:70 x H:170mm	>4,5mm	Black
Single*	115mm	900mm	L:35 x H:170mm	>4,5mm	Black

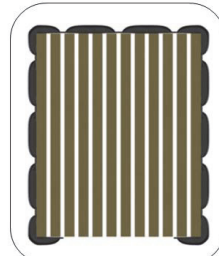
*\*= Single pre cut lengths, often used as a "bumper" inside a marina berth, or as vertical fenders on quay walls.*



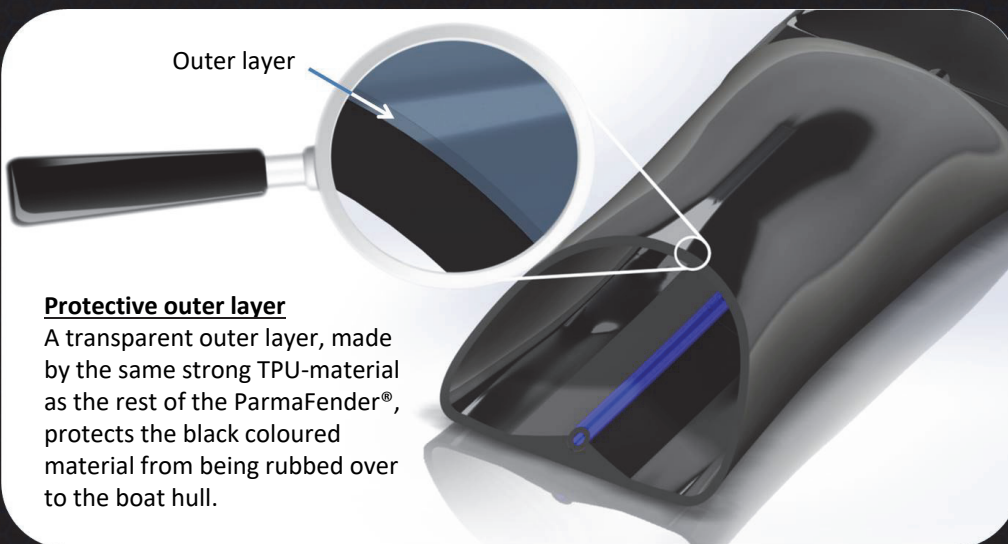
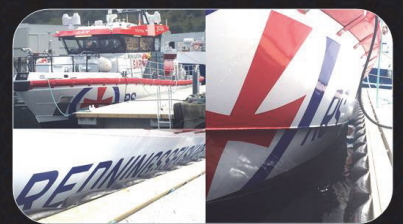
Inside marina berths.



On quay walls.



Around floating docks.



Outer layer

**Protective outer layer**

A transparent outer layer, made by the same strong TPU-material as the rest of the ParmaFender®, protects the black coloured material from being rubbed over to the boat hull.

Dealer:

Manufacturer:



Smaalonane 11  
NO-5353 Straume  
Norway

Phone: +47-56 31 69 00  
Telefax: +47-56 31 69 01  
E-mail: post@parmaplast.no  
Internet: www.parmaplast.no